

TSUNAMIwash

The client's objective was to create a Laundromat that is different from the white and blue faceless facilities that are common to the industry. Since this store is located in the tourist destination and mid-century modern Mecca of Palm Springs, California the design should reflect that heritage.

Tsunami Wash was selected as a name to portray the image of the state of the art larger than industry standard machines and the cleaning power of these machines, the big wave.

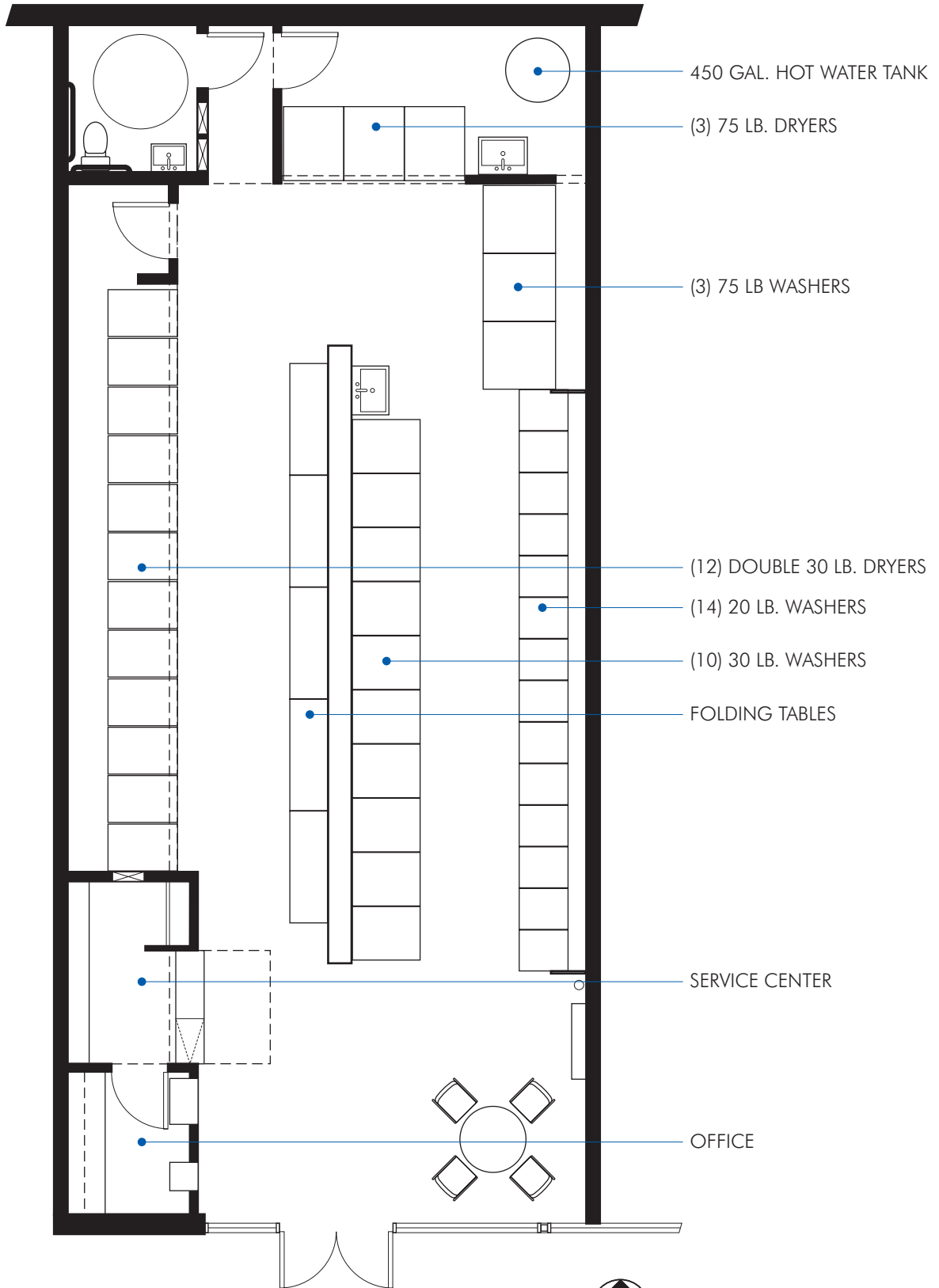
The design concept was to use common construction materials as finished materials. The walls are 2X6 steel studs at 4' on center exposed and paneled with birch plywood or oriented strand board (OSB). The OSB is finished with color stains to keep the texture. All sheetmetal is galvanized and the machines are stainless steel. The floor is sealed concrete in a natural gray. The wood trusses are left exposed as are the large ducts for the evaporative cooling.

The store is divided by a low service cabinet with washers on the right and dryers and folding tables on the left. Very large washers and dryers are in the back. These large machines are used to service Palm Springs boutique hotel clients. In the front of the store are the customer services, coin changers, soap dispensers, customer waiting and the service center with private office.

The store area is 1,800 square feet.

The store opened for business March 14, 2004.





PLAN

SCALE 0' 1' 2' 3' 4' 5' 10'



TSUNAMIwash



